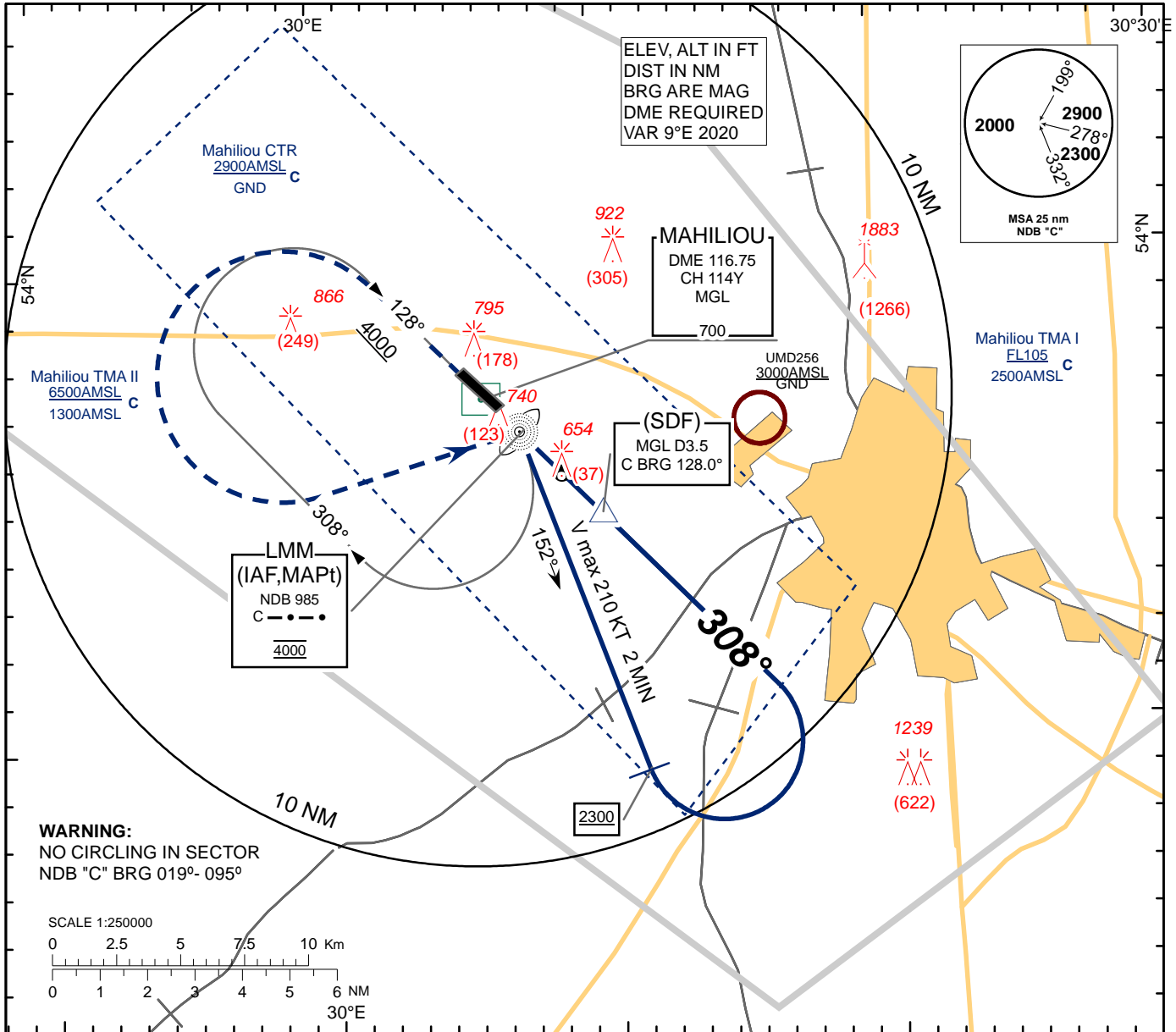


**INSTRUMENT
APPROACH
CHART - ICAO**

AERODROME ELEV 637
HEIGHTS RELATED TO
THR RWY 31 - ELEV THR 617

TWR 127.100
MET 118.075 (EN)
126.200 (RUS)

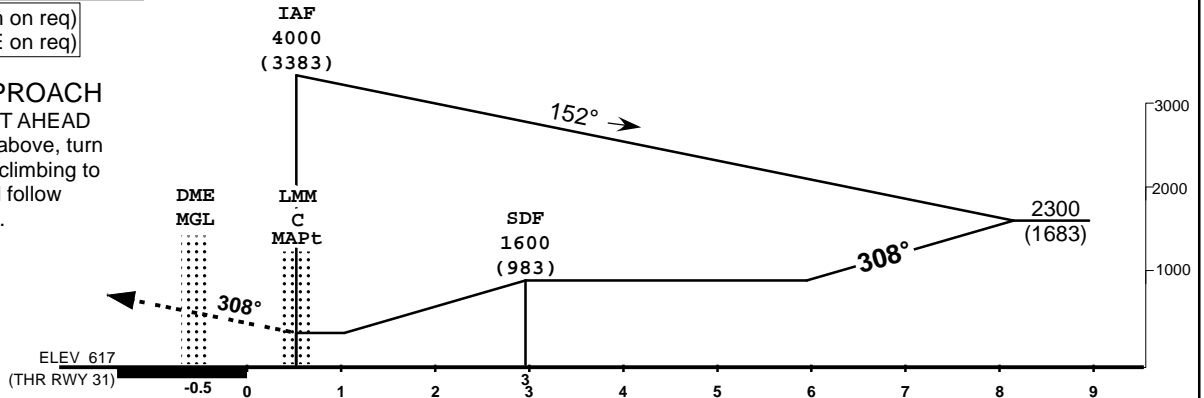
**MAHILIOU
NDB
RWY 31**



TRANSITION ALTITUDE: 6000

Alt set: hPa (mm on req)
QNH (QFE on req)

MISSED APPROACH
Climb STRAIGHT AHEAD
to 1500 (883) or above, turn
LEFT to C NDB climbing to
3000 (2383) and follow
ATC instructions.



CHANGES: New chart.

| Aircraft Category | | A | B | C | D |
|-----------------------------------|-----------------|------------|------------|------------|------------|
| Straight-in Approach OCA(H) | NDB C no FAF | | | 1040(430) | |
| | with SDF | | | 1540(920) | |
| | without SDF | | | | |
| Circle - to - land | | 1100 (460) | 1130 (500) | 1260 (630) | 1330 (690) |

MAHILIOU
NDB
RWY 31

AERONAUTICAL DATA TABULATION

| NDB approach to RWY31 from C LMM | |
|---|------------------------|
| Fix/point | Coordinates |
| (SDF) C LMM 128° D3.5 MGL | 535440N 0300954E |
| (TP) C BRG 152° V 210 KT 2 MIN | 534914N 0301114E |
| MGL DME | 535710.1N 0300544.1E |
| (IAF, MAPt) C LMM | 535626.5N 0300704.4E |
| THR RWY 31 | 535649.32N 0300627.80E |